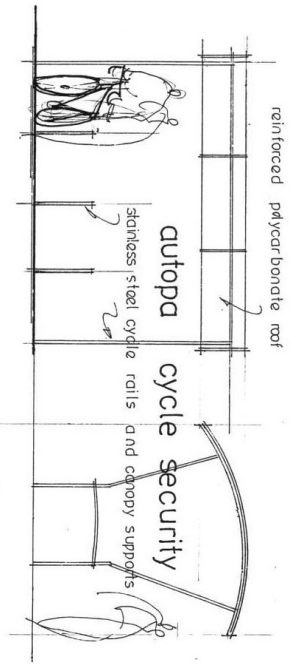




STOCKTON BOROUGH COUNCIL
PLANNING
12 DEC 2007
DATE RECEIVED

COVERED CYCLE SECURITY

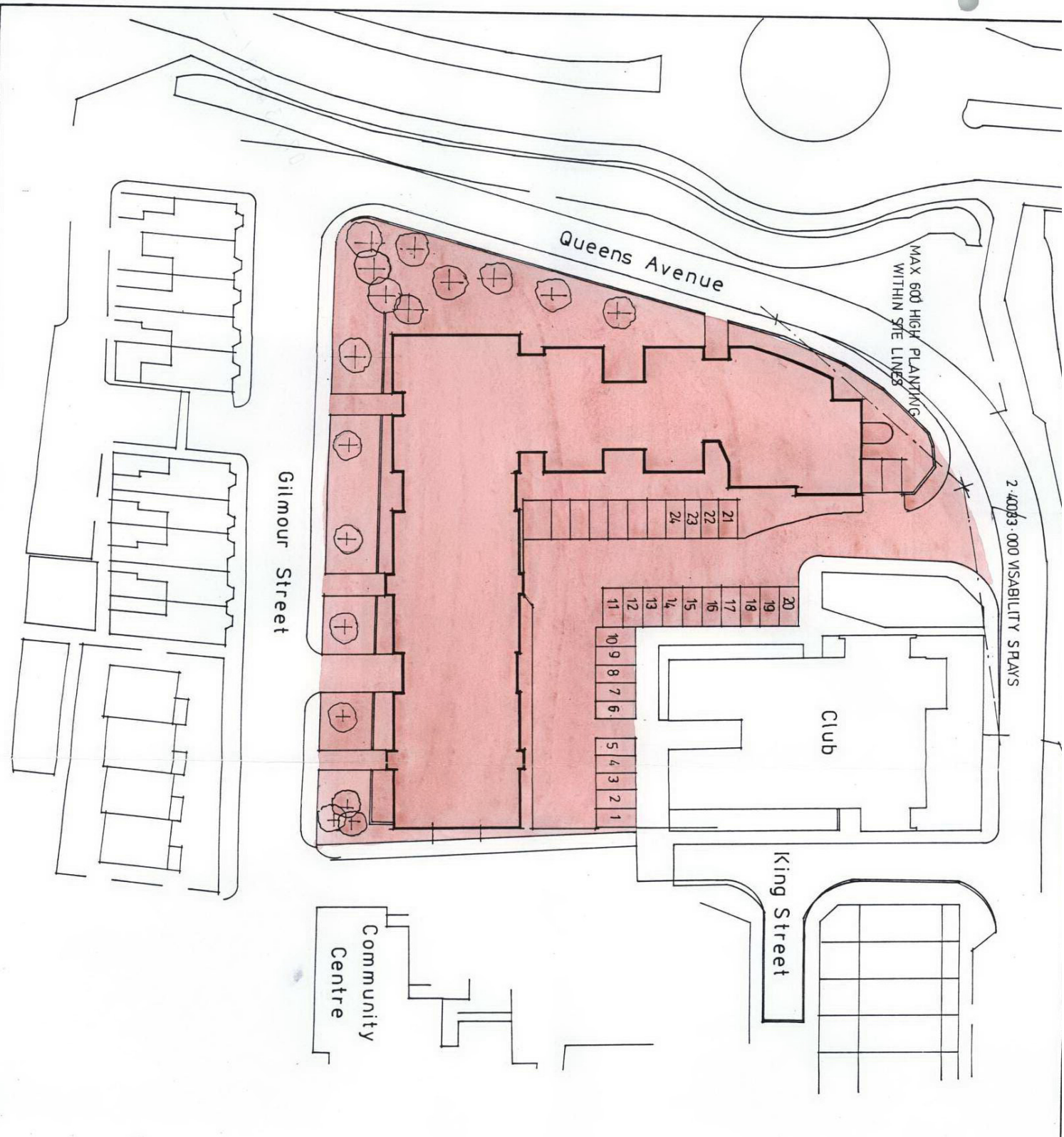


a total of 35 internal or covered spaces

see ground floor plan 1:200 scale for locations of spaces

SBC 0006

07/3/08



PROPOSED STUDENT
 ACCOMMODATION
 QUEENS AVENUE
 STOCKTON-ON-TEES



STOCKTON-BROUGH COUNCIL
 PLANNING
 12 DEC 2007
 DATE RECEIVED

07/34381
 SBC 0002

SCALE 1:500

2.4003.000 VISABILITY SPAYS

MAX 600 HIGH PLANTING
 WITHIN SITE LINES

Queens Avenue

Gilmour Street

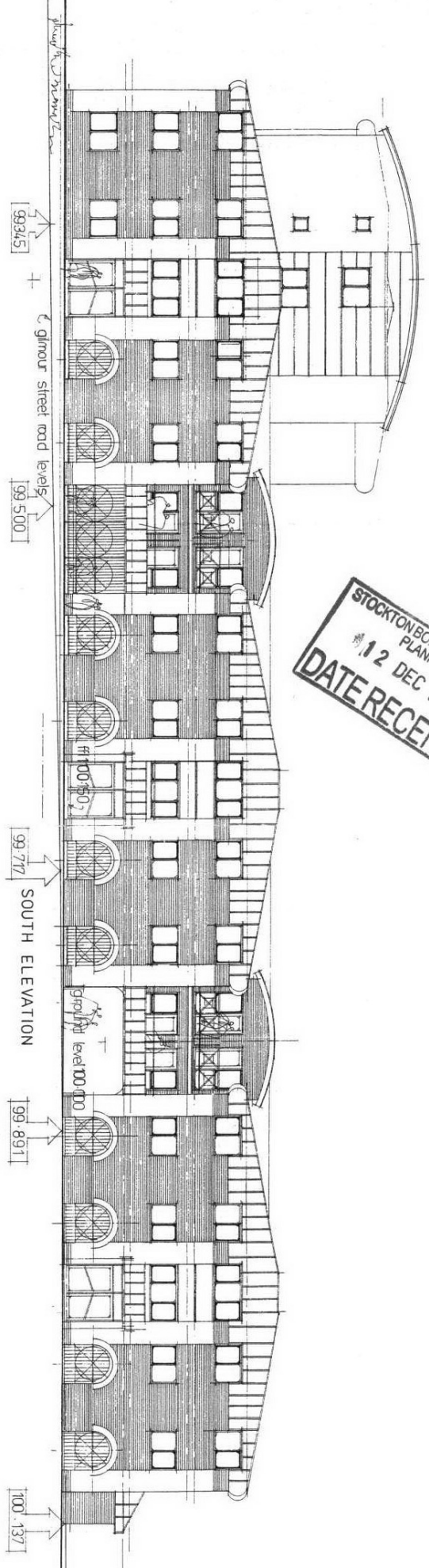
King Street

Community
 Centre

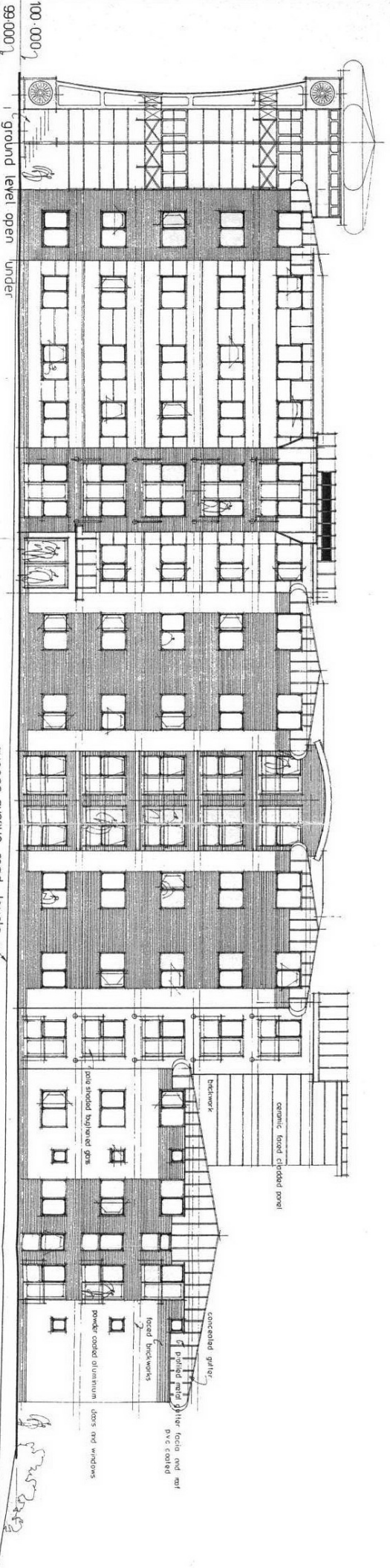
Club

- 20
- 19
- 18
- 17
- 16
- 15
- 14
- 13
- 12
- 11
- 10
- 9
- 8
- 7
- 6
- 5
- 4
- 3
- 2
- 1
- 21
- 22
- 23
- 24

STOCKTON BOROUGH COUNCIL
PLANNING
12 DEC 2007
DATE RECEIVED



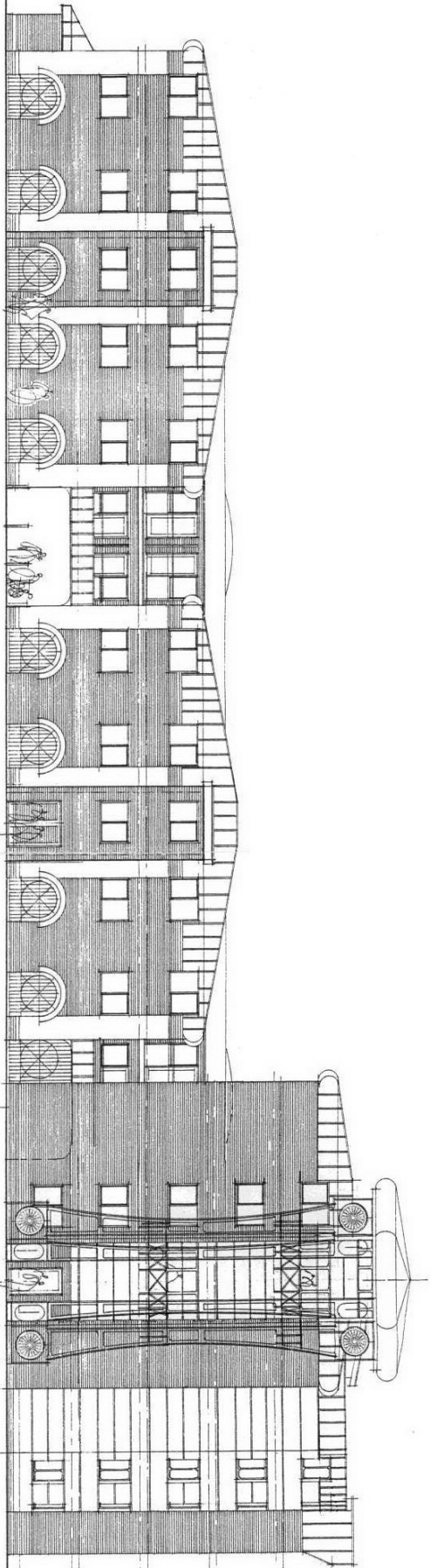
SBC 0004



PROPOSED STUDENT ACCOMMODATION FOR KEXGILL ACCOMMODATION
QUEENS AVENUE THORNABY STOCKTON ON TEES

queens avenue road levels
WEST ELEVATION FACING QUEENS AVENUE

scale 1:200



NORTH ELEVATION

open railings to provide views through complex

STOCKTON BOROUGH COUNCIL
PLANNING
#12 DEC 2007
DATE RECEIVED

SBC 0003

07/34381

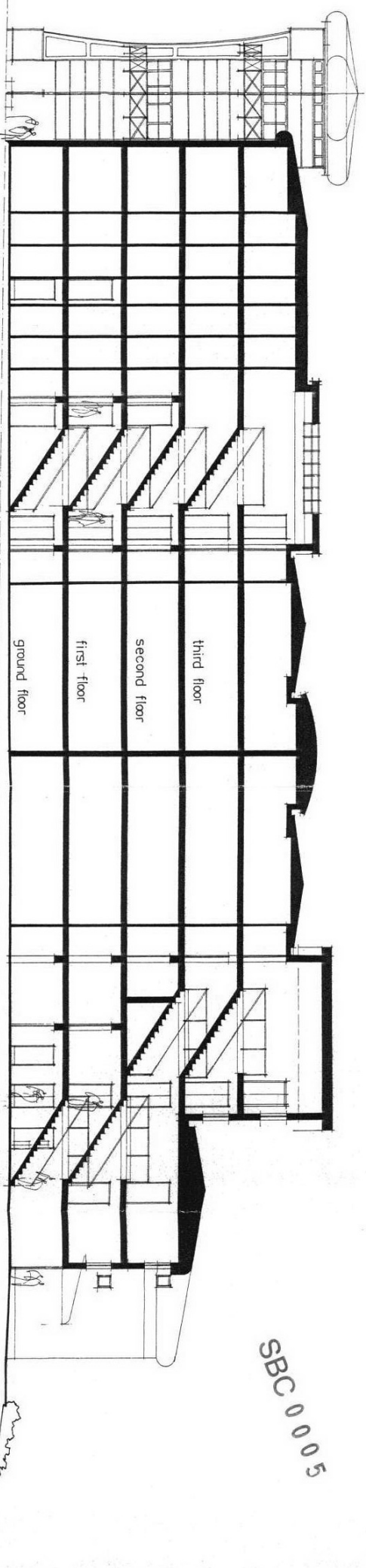
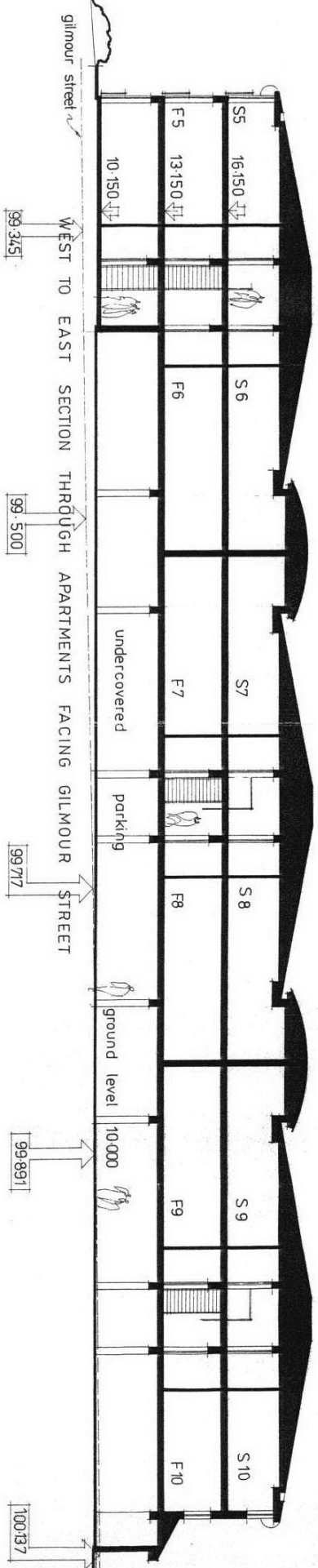


EAST ELEVATION

PROPOSED STUDENT ACCOMMODATION FOR KEXGILL ACCOMMODATION
QUEENS AVENUE · THORNABY · STOCKTON ON TEES

scale 1:200

STOCKTON BOROUGH COUNCIL
 PLANNING
 12 DEC 2007
 DATE RECEIVED



PROPOSED STUDENT ACCOMMODATION FOR KEXGILL ACCOMMODATION.
 QUEENS AVENUE. THORNABY. STOCKTON ON TEES

NORTH TO SOUTH SECTION THROUGH APARTMENTS FACING QUEENS AVENUE.

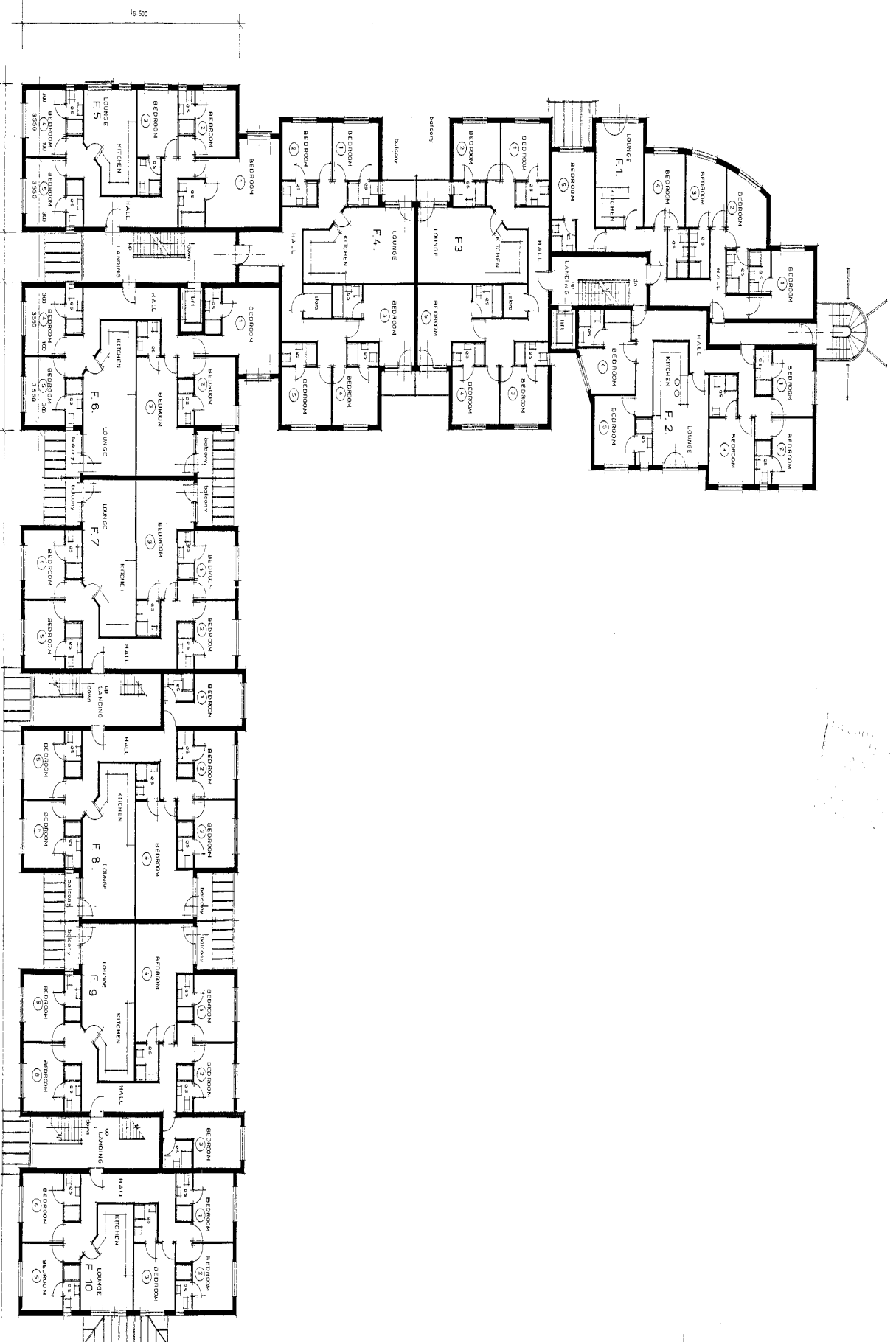
scale 1:200

SBC 0 0 0 5



STOCKTON BOROUGH COUNCIL
PLANNING
12 DEC 2007
APPROVED

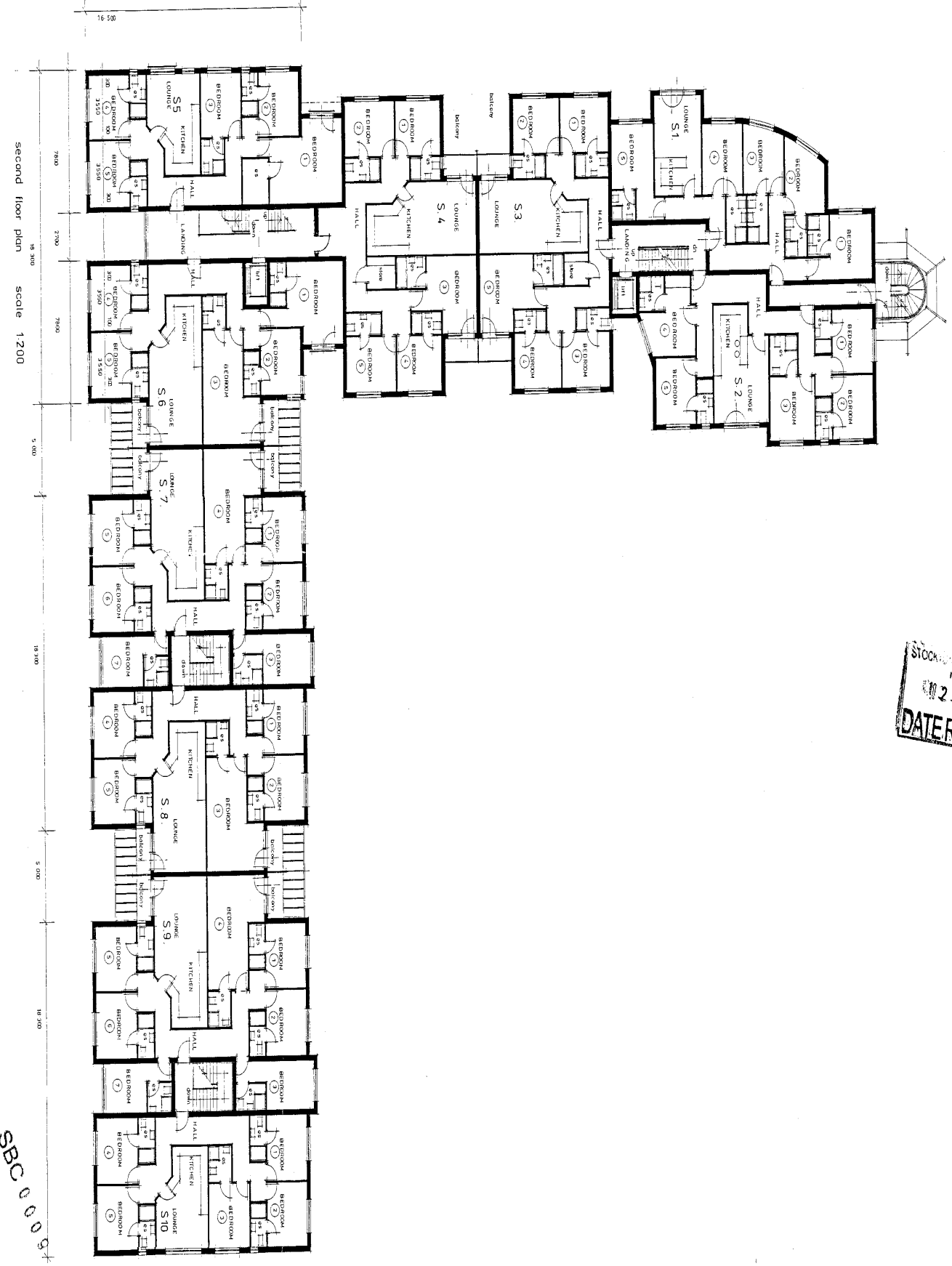
SBC 0007
07/34381



first floor plan scale 1:200

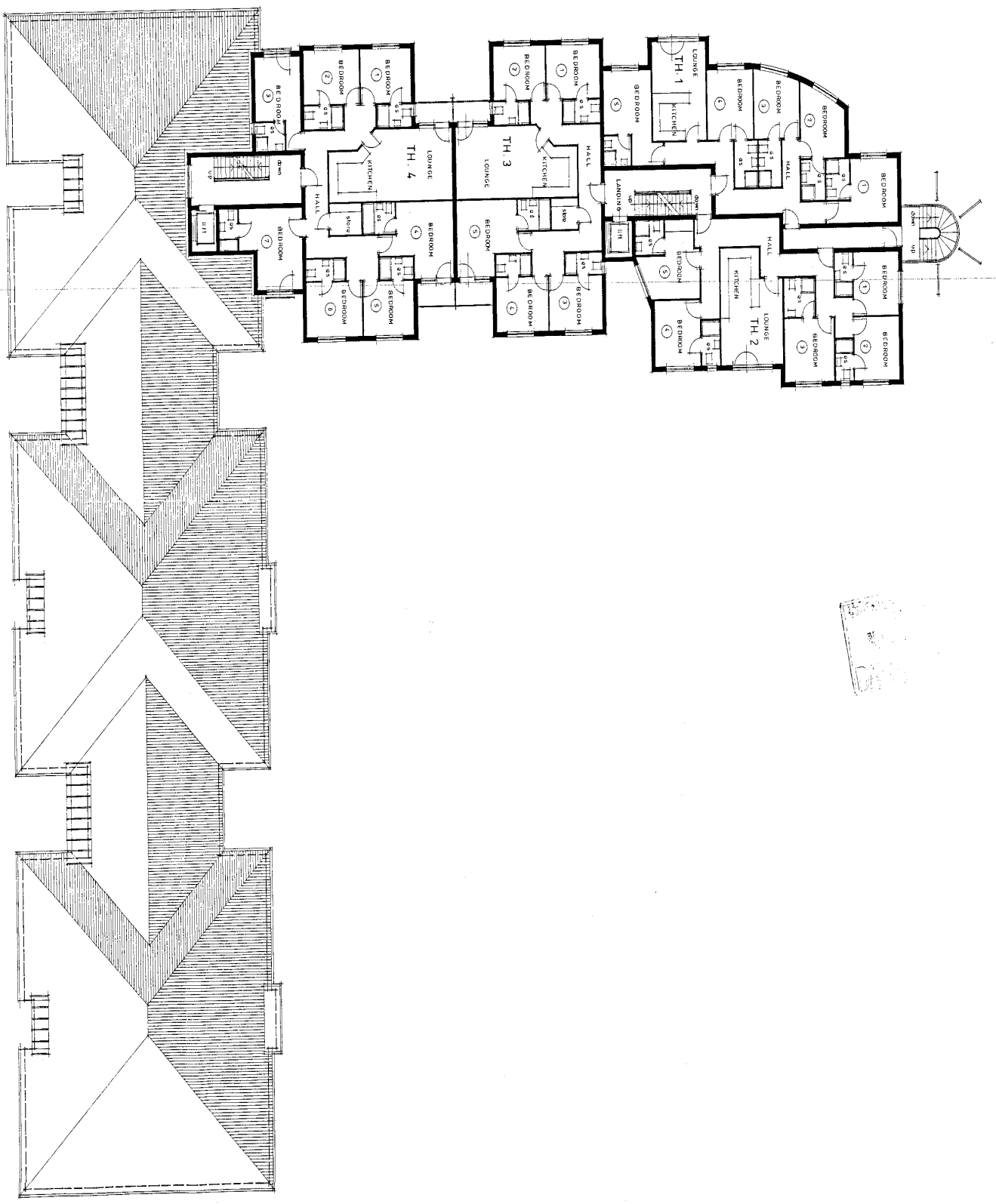
PROPOSED STUDENTS ACCOMMODATION QUEENS AVENUE THORNABY STOCKTON ON TEES FOR KEXGILL ACCOMMODATION.

SBC 0002



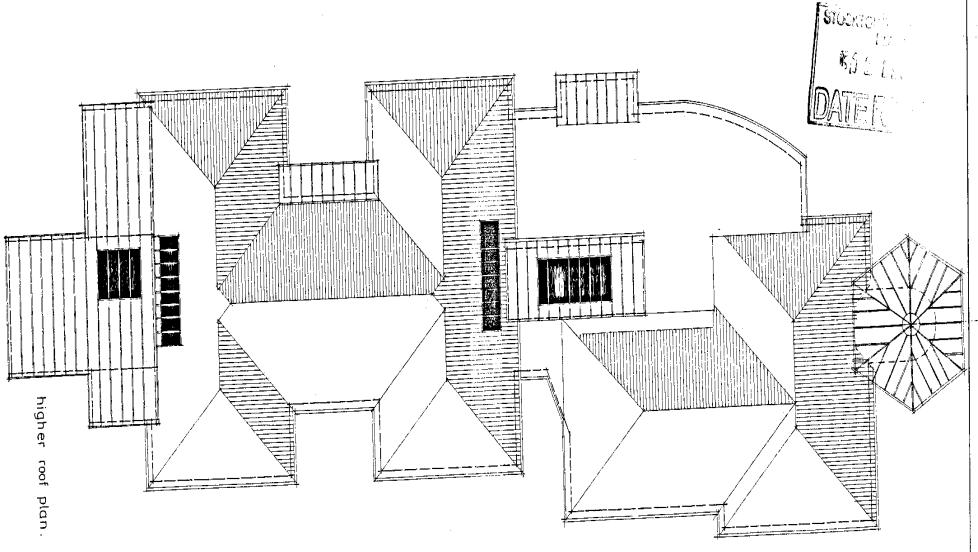
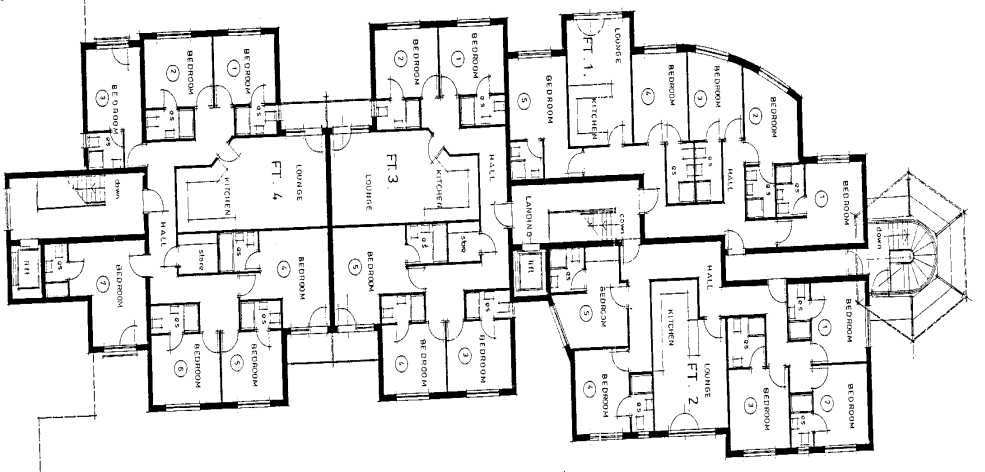
STOCKTON PLANNING
 02 DEC 2007
 DATE RECEIVED

SBC 0003



third floor plan . scale 1:200

SBC 0010



fourth floor plan. scale 1/200.

SBC 0011